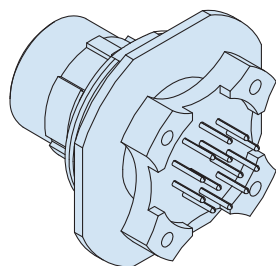
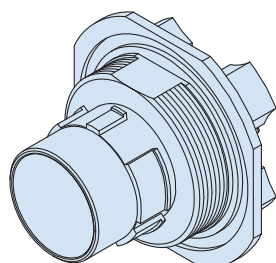


MIL-DTL-38999 Series IV Type
234-211-07 Jam nut receptacles with PC tails, dual-flange



"BETTER-THAN-QPL" FEATURES AND BENEFITS

- Secure breach-lock mating connector meets D38999 shock and vibrate
- Improved plug ground fingers deliver outstanding EMI performance—equal to D38999 Series III
- Glenair Signature Tin Zinc finish class is RoHS compliant and cadmium compatible
- Precision-machined key/keyway polarization for reliable mismatching protection
- Scoop-proof design prevents pin damage and short circuits
- Fully tooled for all MIL-STD-1560 insert arrangements
- Contact options include size #22D, #20, #16, and #12 (see High-Speed series for Size #8)
- 500 mating cycles exceeds MIL-DTL-38999 specification

HOW TO ORDER							
Sample Part Number	234-211	-07	NF	11	-35	P	N
Basic Part Number	234-211						
Connector Style	07 = Jam-Nut, Standard Thread Flange 17 = Jam-Nut, Metric Thread Flange						
Material/Finish	(See Table I)						
Shell Size	11, 13, 15, 17, 19, 21, 23, 25						
Insert Arrangement	PER MIL-STD-1560						
Insert Designator	P = Pin, Gold S = Socket, Gold H = Pin, Pd/Ni J = Socket, Pd/Ni						
Alternate Polarization	A, B, C, D, K, L, M, R, N = Normal						

TABLE I - MATERIAL/FINISH			
Equiv Class	Sym	Material	Finish
W	NF	Aluminum Alloy	Cad/O.D. over Electroless Nickel
G*	MA**		Electroless Nickel, Matte
T*	MT		Nickel-PTFE
F	ME		Electroless Nickel
AA	MN		MegaNickel
V	TZ		Tin-Zinc
Z*	ZR		Zinc Ni, Black (Tri-Valent CR)
K*	Z1	Stainless Steel	Passivate
L*	ZL		Electrodeposited Nickel

* = Glenair Equivalent Only

** = Connectors for space applications must be ordered with "MA" finish and mod code "-186T" to conform to the thermal vacuum outgassing requirements of class G.

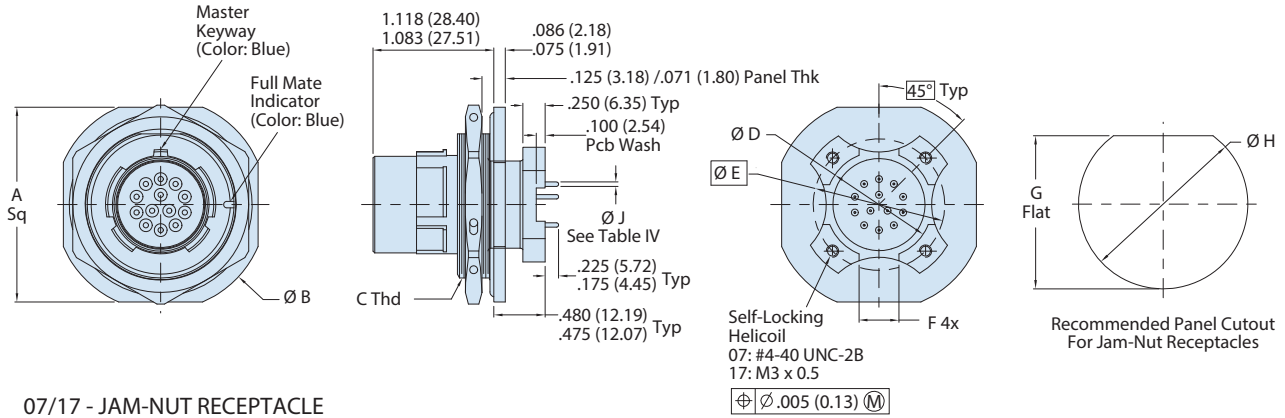
TABLE IV - PC TAIL	
Contact Size	PC Tail ØM
#23	.020 (0.51) .018 (0.46)
#22	.020 (0.51) .018 (0.46)
#20	.030 (0.76) .028 (0.71)
#16	.040 (1.02) .038 (0.97)
#12	.072 (1.83) .070 (1.78)

ENVIRONMENTAL CONNECTORS

MIL-DTL-38999 Series IV Type
234-211-07 Jam nut receptacles with PC tails, dual-flange

ENVIRONMENTAL CONNECTORS

TABLE III - SHELL SIZE



Size Code	Shell Size	A Sq	ØB	C Thd	ØD ±.005	ØE Bsc	F ±.010	G Flat	ØH
B	11	1.393 (35.38) 1.355 (34.42)	1.519 (38.58) 1.481 (37.62)	M25 X 1.0-6g	0.595 (15.11)	0.850 (21.59)	0.250 (6.35)	0.955 (24.26) 0.946 (24.03)	1.019 (25.88) 1.010 (25.65)
C	13	1.519 (38.58) 1.481 (37.62)	1.641 (41.68) 1.603 (40.72)	M28 X 1.0-6g	0.720 (18.29)	0.994 (25.25)	0.250 (6.35)	1.085 (27.56) 1.076 (27.33)	1.144 (29.06) 1.136 (28.85)
D	15	1.641 (41.68) 1.603 (40.72)	1.767 (44.88) 1.729 (43.92)	M31 X 1.0-6g	0.843 (21.41)	1.119 (28.42)	0.325 (8.26)	1.209 (30.71) 1.200 (30.48)	1.270 (32.26) 1.261 (32.03)
E	17	1.799 (45.69) 1.760 (44.70)	1.956 (49.68) 1.918 (48.72)	M34 X 1.0-6g	1.000 (25.40)	1.237 (31.42)	0.375 (9.53)	1.335 (33.91) 1.326 (33.68)	1.394 (35.41) 1.386 (35.20)
F	19	1.909 (48.49) 1.871 (47.52)	2.035 (51.69) 1.997 (50.72)	M38 X 1.0-6g	1.125 (28.58)	1.379 (35.03)	0.500 (12.70)	1.459 (37.06) 1.450 (36.83)	1.519 (38.58) 1.510 (38.35)
G	21	2.035 (51.69) 1.997 (50.72)	2.157 (54.79) 2.119 (53.82)	M41 X 1.0-6g	1.240 (31.50)	1.489 (37.82)	0.562 (14.27)	1.585 (40.26) 1.576 (40.03)	1.644 (41.76) 1.636 (41.55)
H	23	2.157 (54.79) 2.119 (53.82)	2.283 (57.99) 2.245 (57.02)	M44 X 1.0-6g	1.328 (33.73)	1.619 (41.12)	0.688 (17.48)	1.709 (43.41) 1.700 (43.18)	1.769 (44.93) 1.760 (44.70)
J	25	2.283 (57.99) 2.245 (57.02)	2.409 (61.19) 2.371 (60.22)	M47 X 1.0-6g	1.453 (36.91)	1.744 (44.30)	0.750 (19.05)	1.835 (46.61) 1.826 (46.38)	1.894 (48.11) 1.886 (47.90)

NOTES

- Material/Finish:
 - Shell, Jam Nut - See Table I
 - Contacts - Copper Alloy / See Table III
 - Insulators - High Grade Rigid Dielectric.
 - Seals - Fluorosilicone Blend.
 - O-ring - Silver Plated Aluminum in Fluorosilicone (Cho-Seal 1298 or Equivalent)
 - Potting - Epoxy.
- Glenair's 234-211 receptacle connector is designed to meet the applicable performance and interface requirements of MIL-DTL-38999 Series IV except as shown and/or noted. Receptacle mates with any QPL manufacturer's MIL-DTL-38999, Series IV plug having complimentary features (shell size, insert arrangement, polarization, and contact gender).
- Glenair's 234-211 receptacle connector is designed with fixed PC tail contacts. Connector potting process meets or exceeds ingress protection rating IP67 and is environmentally sealed with a leak rate of $< 1 \times 10^{-4}$ ccHe/sec in an unmated condition.
- Insert arrangement is in accordance with MIL-STD-1560. Arrangement shown for reference only.