

"BETTER-THAN QPL" BREECH-LOCK D38999 SERIES IV SuperNine and MIL-DTL-38999 Series IV Environmental

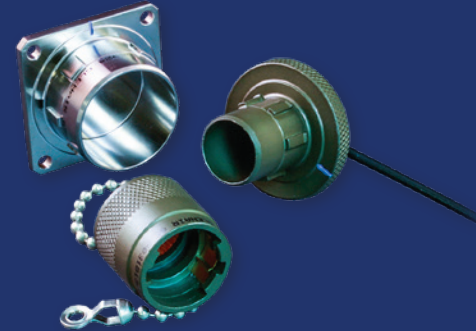


Anti-decoupling, vibration and shock resistant
DLA qualified and Glenair SuperNine derivatives

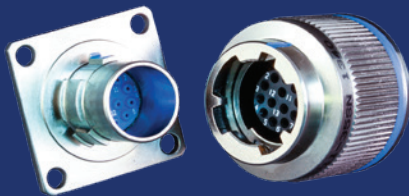
SUPERNINE SERIES IV "BETTER-THAN-QPL" FEATURES AND BENEFITS

- Secure breech-lock mating connector meets D38999 shock and vibrate
- Integral banding porch eliminates need for back-end accessories
- Improved plug ground fingers deliver outstanding EMI performance—equal to D38999 Series III
- Glenair Signature Tin-Zinc finish class is RoHS compliant and cadmium compatible
- Precision-machined key/keyway polarization for reliable mismatching protection
- Scoop-proof design prevents pin damage and short circuits
- Fully tooled for all MIL-STD-1560 insert arrangements
- Contact options include size #22D, #20, #16, #12, and High-Speed Twinax, Quadrax, and Octaxial EI Ochito Size #8 plus hybrid arrangements
- 500 mating cycles exceeds MIL-DTL-38999 specification

38999 SERIES IV ACCESSORIES



QPL accessories including protective covers and dummy receptacles



Series IV solutions are available in environmental and hermetic class configurations in shell sizes from 11–25 supporting a popular range of MIL-STD-1560 insert arrangements



Glenair's complete Series IV solution includes support for power, signal, and hybrid insert arrangements including shielded coax, #22, #20, #16 and #12 contacts

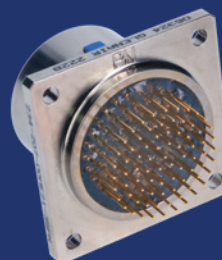
"BETTER-THAN-QPL" SUPERNINE SERIES IV CONNECTOR DESIGNS



Sav-Con® connector saver, black zinc-nickel finish



Dual-flange panel-mount feedthrough



Panel-mount receptacle with sealed PC-tails



Plug with wing-lock coupling and EMI ground fingers

SUPPORTED CRIMP-CONTACT SHELL STYLES



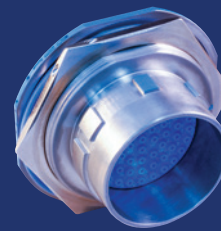
Plug



Wall-Mount Receptacle



Box-Mount Receptacle



Jam-Nut Receptacle



In-Line Receptacle