

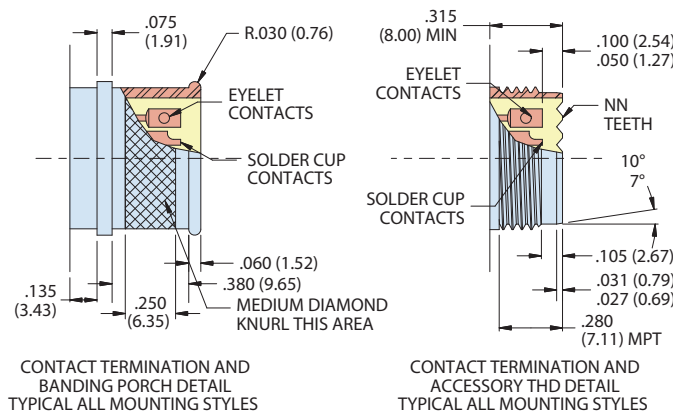
MIL-DTL-38999 Series IV Type  
 234-111 Hermetic Receptacle with Band Porch or Accessory Threads

HERMETIC CONNECTORS

**NOTES**

- Material / finish:
  - Shell, jam-nut - 300 series cres / per p/n development
  - Contacts, hermetic - nickel-iron alloy / gold plate
  - Contacts, socket - copper alloy / gold plate
  - Insulator, hermetic - vitreous glass / none
  - Insulator, socket - rigid dielectric / none
  - Seals, o-rings - fluorosilicone elastomer
- Test Criteria:
  - DWV - PER MIL-STD-1560 service rating (table iii)
  - IR - 5000 MEGOHMS MIN @ 500 VDC
  - Leak Rate -  $<1 \times 10^{-7}$  ccHe/sec @ 1 ATM Delta P
- Glenair 234-111 conforms to mechanical, performance, and dimensional requirements of dtl-38999 Series iv hermetic receptacles except for the addition of accessory threads.
- Glenair 234-111 is designed to mate with any QPL MFRS D38999/46 or /47 plug with the same shell size, polarization, contact arrangement, and opposite contact gender.
- Glenair 234-111 is available with solder cup or eyelet terminated pin or socket face, and with specified finishes. Consult factory for alternative finishes or arrangements.

HOW TO ORDER	
<b>Sample Part Number</b>	<b>234-111</b> -H2 T Z1 13 -35 S N
<b>Basic Part Number</b>	234-111 Hermetic Receptacle with Band Porch or Accessory Threads
<b>Mounting Style</b>	H2 = Panel mount H7 = Jam-Nut Mount H8 = Weld Mount
<b>Rear Attachment Type</b>	B = Banding Porch T = Accessory Threads
<b>Finish</b>	See Finish Table
<b>Shell Size</b>	11, 13, 15, 17, 19, 21, 23, 25
<b>Contact Arrangement</b>	Per MIL-STD-1560
<b>Contact Style</b>	P = Pin Face, Solder Cup    S = Skt Face, Solder Cup X = Pin Face, Eyelet        Z = Skt Face, Eyelet
<b>Keying Position</b>	Specify Position Per Key Position Table Specify <b>N</b> For Normal



Shell Size	"NN" Teeth
11	16
13	20
15	24
17	28
19	32
21	36
23	40
25	44

KEYING POSITION		
	<b>Key Position</b>	
	N	110°    250°
	A	100°    260°
	B	90°     270°
	C	80°     280°
	D	70°     290°
	K	120°    255°
	L	120°    265°
	M	120°    275°
	R	120°    285°

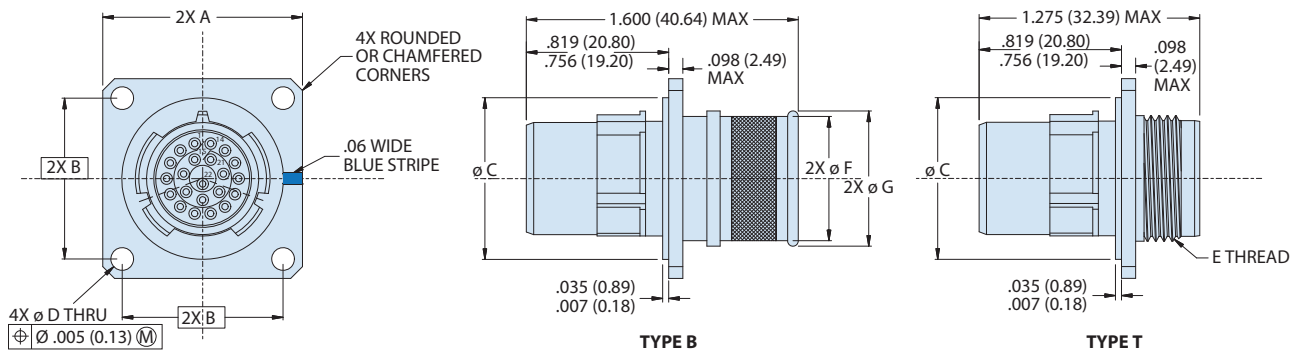
DWV VOLTAGE LEVELS @ SEA LEVEL	
<b>Service Rating</b>	<b>Voltage Ac Rms 60hz</b>
M	1300 VAC
I	1800 VAC
II	2300 VAC
N	1000 VAC

MATERIAL/FINISH			
D-38999 Class	234-111 Class	Shell Material	FinishDescription
N	ZL	Stainless Steel	Nickel Plated
Y	Z1		Passivated

MIL-DTL-38999 Series IV Type  
 234-111 Hermetic Receptacle with Band Porch or Accessory Threads

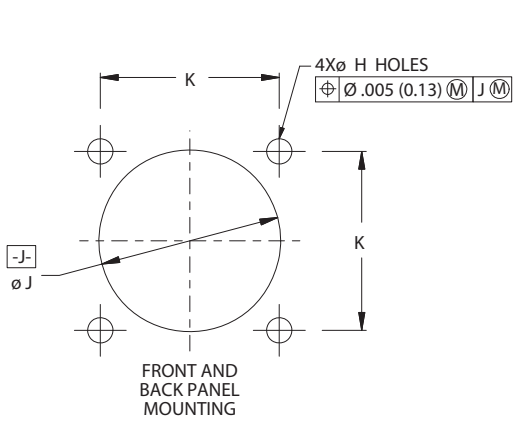
HERMETIC CONNECTORS

**-H2 PANEL MOUNT DIMENSIONS**



Shell Size Code	Shell Size	A Sq	B Bsc	C Dia	D Dia	E ISO THD Metric	F Dia	G Dia
B	11	1.051 (26.70) 1.008 (25.60)	.812 (20.62)	.793 (20.14) .778 (19.76)	.138 (3.51) .122 (3.10)	M15 X 1.0-6g	.600 (15.24)	.662 (16.81)
C	13	1.145 (29.08) 1.102 (27.99)	.906 (23.01)	.919 (23.34) .904 (22.96)	.138 (3.51) .122 (3.10)	M18 X 1.0-6g	.700 (17.78)	.762 (19.35)
D	15	1.240 (31.50) 1.197 (30.40)	.969 (24.61)	1.044 (26.52) 1.029 (26.14)	.138 (3.51) .122 (3.10)	M22 X 1.0-6g	.835 (21.21)	.898 (22.81)
E	17	1.334 (33.88) 1.291 (32.79)	1.062 (26.97)	1.170 (29.72) 1.155 (29.34)	.138 (3.51) .122 (3.10)	M25 X 1.0-6g	.960 (24.38)	1.022 (25.96)
F	19	1.460 (37.08) 1.417 (35.99)	1.156 (29.36)	1.294 (32.87) 1.279 (32.49)	.138 (3.51) .122 (3.10)	M28 X 1.0-6g	1.062 (26.97)	1.125 (28.58)
G	21	1.583 (40.21) 1.539 (39.09)	1.250 (31.75)	1.419 (36.04) 1.404 (35.66)	.138 (3.51) .122 (3.10)	M31 X 1.0-6g	1.188 (30.18)	1.266 (32.16)
H	23	1.709 (43.41) 1.665 (42.29)	1.375 (34.92)	1.544 (39.22) 1.529 (38.84)	.157 (3.99) .142 (3.61)	M34 X 1.0-6g	1.275 (32.39)	1.338 (33.99)
J	25	1.835 (46.61) 1.791 (45.49)	1.500 (38.10)	1.670 (42.42) 1.654 (42.01)	.157 (3.99) .142 (3.61)	M37 X 1.0-6g	1.475 (37.47)	1.538 (39.07)

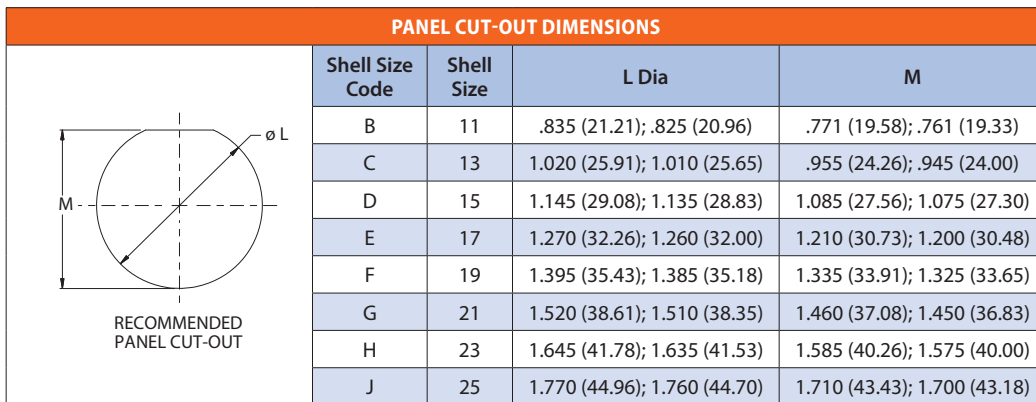
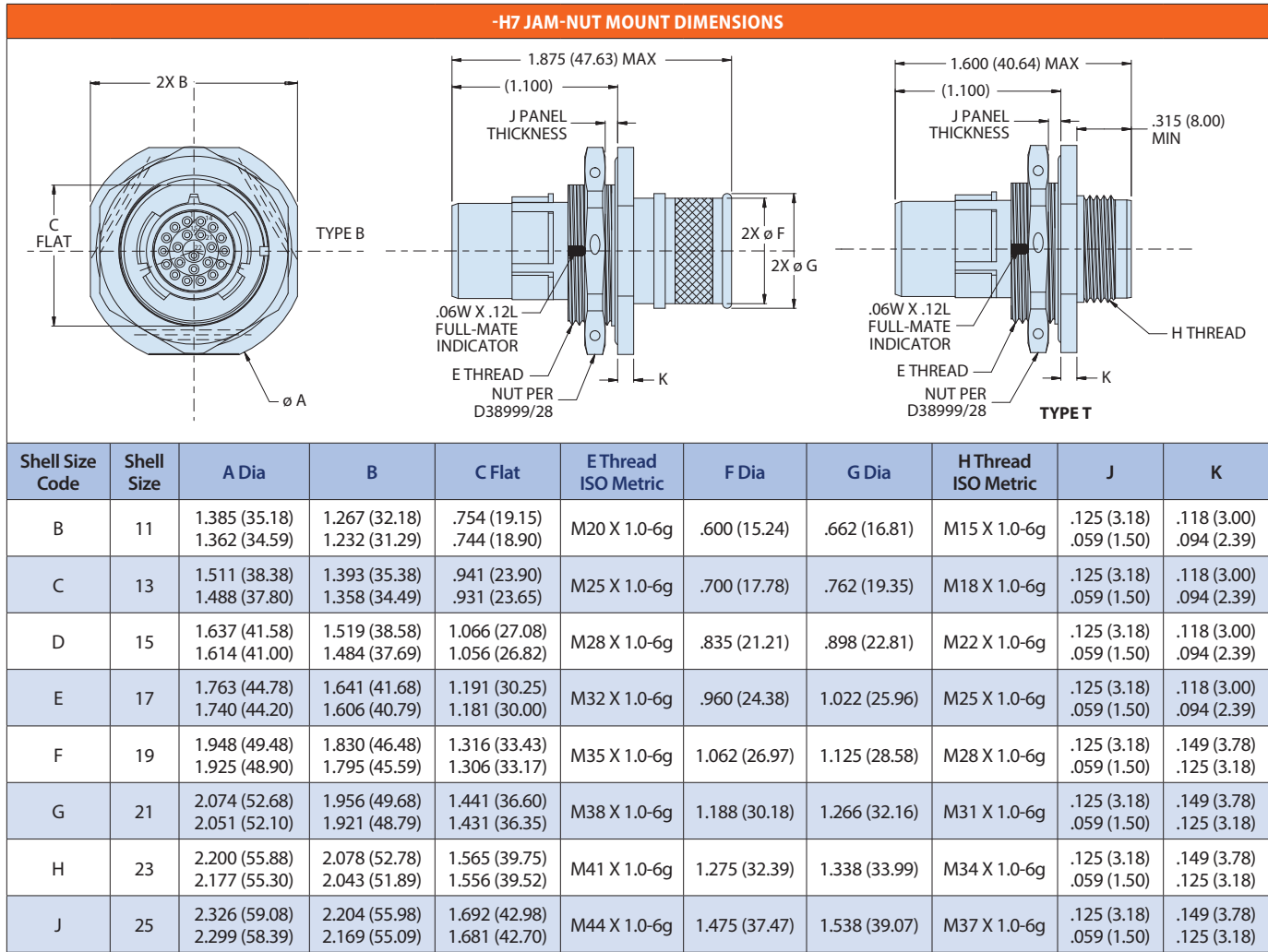
**PANEL CUT-OUT DIMENSIONS**



Shell Size Code	Shell Size	Ø H Holes	Ø J Min		K Bsc
			Type B	Type T	
B	11	.133 (3.38); .123 (3.12)	.796 (20.22)	.845 (21.46)	.812 (20.62)
C	13	.133 (3.38); .123 (3.12)	.921 (23.39)	.965 (24.51)	.906 (23.01)
D	15	.133 (3.38); .123 (3.12)	1.047 (26.59)	1.095 (27.81)	.969 (24.61)
E	17	.133 (3.38); .123 (3.12)	1.218 (30.94)	1.235 (31.37)	1.062 (26.97)
F	19	.133 (3.38); .123 (3.12)	1.296 (32.92)	1.365 (34.67)	1.156 (29.36)
G	21	.133 (3.38); .123 (3.12)	1.421 (36.09)	1.485 (37.72)	1.250 (31.75)
H	23	.159 (4.04); .149 (3.78)	1.546 (39.27)	1.605 (40.77)	1.375 (34.92)
J	25	.155 (3.94); .145 (3.68)	1.672 (42.47)	1.725 (43.82)	1.500 (38.10)

MIL-DTL-38999 Series IV Type  
 234-111 Hermetic Receptacle with Band Porch or Accessory Threads

HERMETIC CONNECTORS



MIL-DTL-38999 Series IV Type  
 234-111 Hermetic Receptacle with Band Porch or Accessory Threads

HERMETIC CONNECTORS

