



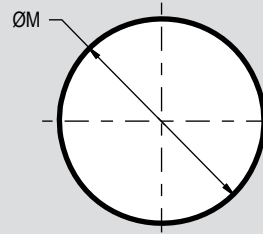
RJ45 ETHERNET AND USB 2.0
Recommended Panel Cutouts
 For MIL-DTL-28840 type connectors



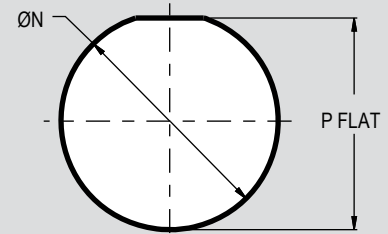
A

MIL-DTL-28840 TYPE PANEL CUTOUTS FOR RJ12 SHELL SIZE 15 AND 17

Recommended Panel Cutouts			
Shell Size	ØM	ØN	P Flat
15	1.124 (28.55)	1.203 (30.56)	1.165 (29.59)
		1.193 (30.30)	1.155 (29.34)
17	1.187 (30.15)	1.265 (32.13)	1.228 (31.19)
		1.255 (31.88)	1.218 (30.94)



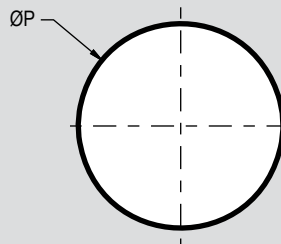
WALL MOUNT RECEPTACLE
 MAX PANEL THICKNESS
 .188 (4.78)



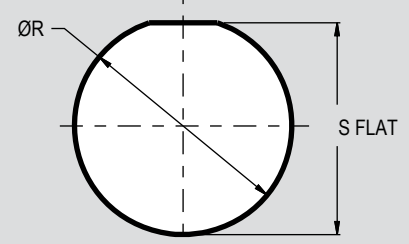
REAR PANEL MOUNT
 JAM NUT RECEPTACLE
 MAX PANEL THICKNESS
 .188 (4.78)

MIL-DTL-28840 TYPE PANEL CUTOUTS FOR RJ45 FOR SHELL SIZE 17 AND 19

Panel Cutouts			
Shell Size	ØP	ØR	S Flat
17	1.187 (30.15)	1.265 (32.13)	1.228 (31.19)
		1.255 (31.88)	1.218 (30.94)
19	1.374 (34.90)	1.453 (36.91)	1.415 (35.94)
		1.443 (36.65)	1.405 (35.69)

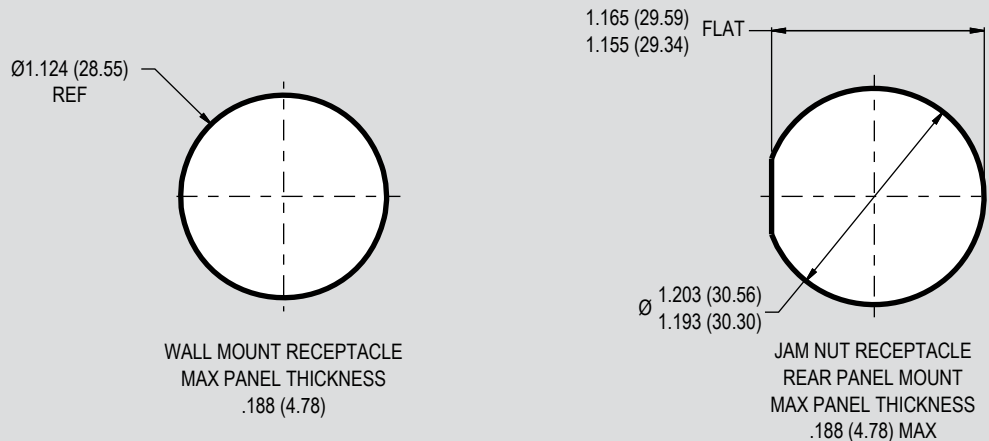


WALL MOUNT RECEPTACLE
 MAX PANEL THICKNESS
 .188 (4.78)



REAR PANEL MOUNT
 JAM NUT RECEPTACLE
 MAX PANEL THICKNESS
 .188 (4.78)

MIL-DTL-28840 TYPE USB PANEL CUTOUTS FOR SHELL SIZE 15



WALL MOUNT RECEPTACLE
 MAX PANEL THICKNESS
 .188 (4.78)

JAM NUT RECEPTACLE
 REAR PANEL MOUNT
 MAX PANEL THICKNESS
 .188 (4.78) MAX