



RJ45 CAT 5E/6A ETHERNET

MIL-DTL-38999 Series III Type Connectors



Product Selection Guide



233-312 E-9
SuperSeal™ CAT 6A Plug with RJ45 Male Mating Interface and Accessory Threads



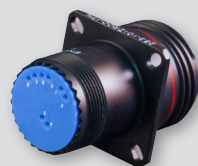
233-330 E-22
SuperSeal™ CAT 5e and 6A Feed-thru Receptacle with Jack-to-Jack RJ45.



233-300 E-10
SuperSeal D38999 Type plug with CAT 5e or 6A RJ45 Plug or D38999 Type Receptacle with CAT 5e or 6A RJ45 Jack. D38999 Type Shells with Accessory Threads



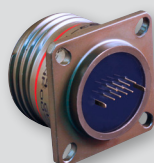
Cable Assemblies E-24
SuperSeal™ CAT 5e Cable Assemblies



233-301 E-12
SuperSeal™ CAT 5e Receptacle Adapter with RJ45 Mating Interface and Crimp Removable Contacts.



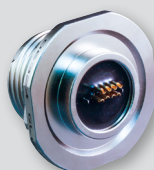
Transient Voltage Suppression (TVS) RJ45 Connectors E-25
Prevents Catastrophic EMP Failure in Military and Commercial Aircraft



233-302 E-14
SuperSeal™ CAT 5e Receptacle with RJ45 Mating Interface and PC Tail Termination.



244-001 E-27
SuperSeal™ CAT 5e Transient Voltage Suppression, Jam-Nut Receptacle with Standoffs and RJ45 Jack to PC Tail or Solder Cup Termination.



233-303 E-16
SuperSeal™ CAT 5e Receptacle with RJ45 Mating Interface and Solder Cup Termination.



244-002 E-28
SuperSeal™ CAT 5e Transient Voltage Suppression, Wall Mount Receptacle with Standoffs and RJ45 Jack, Mating Interface to PC Tail or Solder Cup.



233-304 E-18
SuperSeal™ CAT 5e MIL-STD-1560 Interface Receptacle Adapter with Accessory Threads and Rear RJ45 Jack.



244-003 E-29
SuperSeal™ CAT 5e Transient Voltage Suppression Jam-Nut Receptacle with Accessory Threads and RJ45 Jack, Mating Interface to PC Tail or Solder Cup.



233-305 E-20
SuperSeal™ CAT 5e Quadrx Interface Receptacle Adapter with Accessory Threads and Rear RJ45 Jack.



244-004 E-30
SuperSeal™ CAT 5e Transient Voltage Suppression Wall Mount Receptacle with Accessory Threads and RJ45 Jack, Mating Interface to PC Tail or Solder Cup.

