



USB 3.2 GEN 2 TYPE C

Series 801, 804 and 805 Mighty Mouse



804-380 Connector with USB 3.2 Gen 2 Type C F-F Coupler

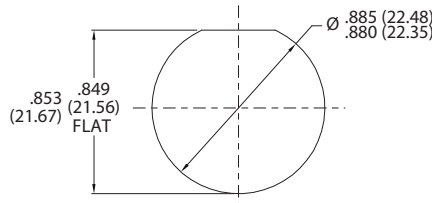
Series 804 Push/Pull

How To Order	
Sample Part Number	804-380 - NF 01 -12 A
Series	804-380 = F-F Coupler
Rear Accessory Option	- = Accessory Thread and Teeth S = Integrated Banding Platform B = Integrated Boot Adaptor
Material and Finish ¹	NF = Aluminum/Cadmium, Olive Drab ME = Aluminum/Electroless Nickel MT = Aluminum/Nickel PTFE ZNU = Aluminum/Black Zinc Nickel
Shell Style ¹	01 = In-Line Receptacle 00 = Jam-nut Receptacle for Front Panel Mounting 07 = Jam-nut Receptacle for Rear Panel Mounting
Shell Size	-12 = Shell Size 12
Alternate Key Positions ¹	A, B, C, D, E, F

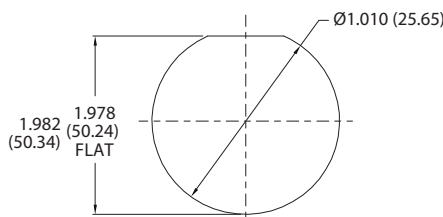
NOTES

- Interpret drawing per ASME Y14.5 - 2009.
- Material/Finishes:
 - Shell, coupling nut, jam nut - AL alloy or CRES / see Mighty Mouse Series 804 catalog
 - Seal/O-ring - fluorosilicone
 - Hardware: stainless steel
- USB Type C:
 - Housing: thermoplastic/NA
 - Shell: copper alloy/nickel plated
 - Terminal: copper alloy/gold plated
- USB 3.2 Gen 2 (Type C) specifications:
 - Electrical: D.W.V.: 100 Vac
 - I.R.: 100 Megohms min.
 - Operating temperature range: -20°C to +85°C
- Performance: design meets USB 3.2 Gen 2 (Type C) benchmark data transfer rate requirements for read and write.
- Sealing Rate: IP67 in unmated condition. IP68 in mated condition

PANEL CUTOUT DIMENSIONS

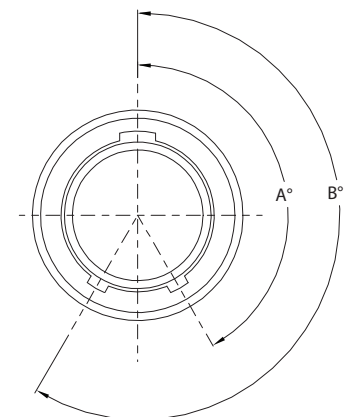


RECOMMENDED PANEL CUTOUT FOR FRONT MOUNT JAM NUT RECEPTACLE



RECOMMENDED PANEL CUTOUT FOR FRONT MOUNT JAM NUT RECEPTACLE

Alternate Key and Keyway Positions		
Position	A°	B°
A	150°	210°
B	75°	210°
C	95°	230°
D	140°	275°
E	75°	275°
F	95°	210°



NORMAL AND ALTERNATE POSITION KEY ROTATION



USB 3.2 GEN 2 TYPE C

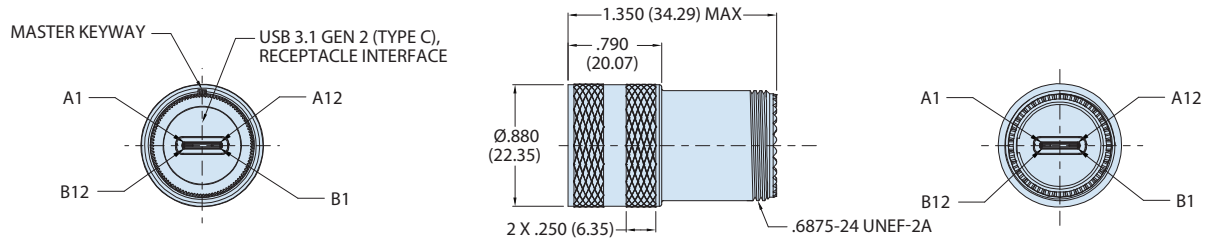
Series 801, 804 and 805 Mighty Mouse



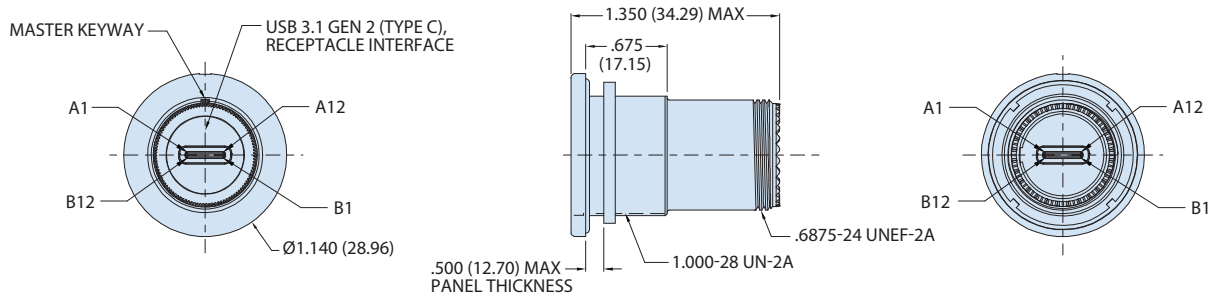
804-380 Connector with USB 3.2 Gen 2 Type C
F-F Coupler

Series 804 Push/Pull

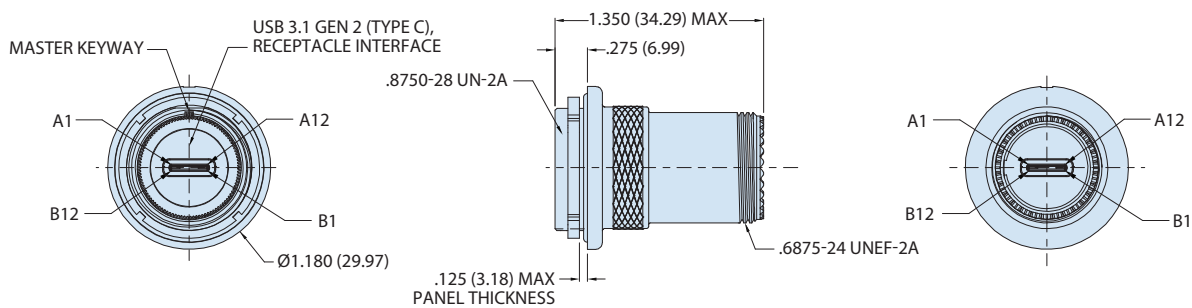
SHELL STYLE 01 INLINE RECEPTACLE



SHELL STYLE 00 JAM NUT RECEPTACLE FOR FRONT PANEL MOUNTING



SHELL STYLE 07 JAM NUT RECEPTACLE FOR REAR PANEL MOUNTING





USB 3.2 GEN 2 TYPE C

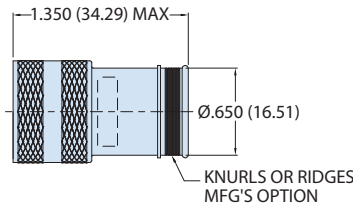
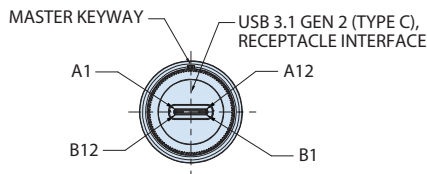
Series 801, 804 and 805 Mighty Mouse



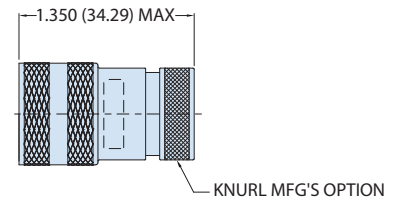
804-380 Connector with USB 3.2 Gen 2 Type C F-F Coupler

Series 804 Push/Pull

SHELL STYLE 01 INLINE RECEPTACLE

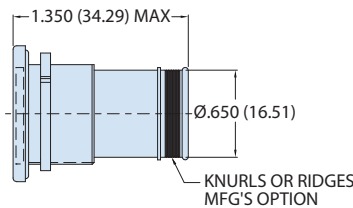
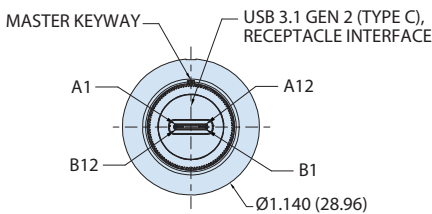


S - INTEGRATED BANDING PLATFORM

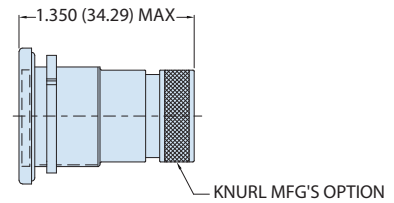


B - INTEGRATED BOOT ADAPTOR

SHELL STYLE 00 JAM NUT RECEPTACLE FOR FRONT PANEL MOUNTING

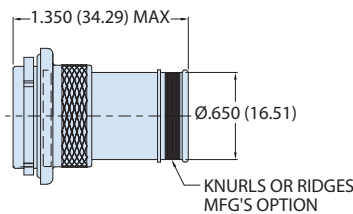
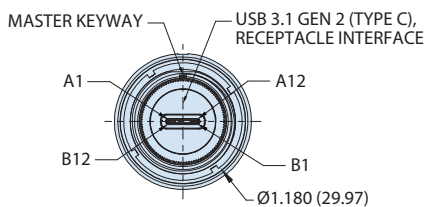


S - INTEGRATED BANDING PLATFORM

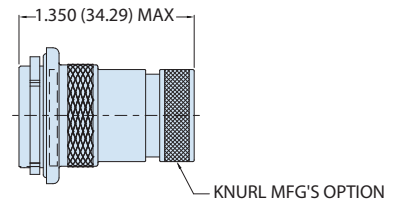


B - INTEGRATED BOOT ADAPTOR

SHELL STYLE 07 JAM NUT RECEPTACLE FOR REAR PANEL MOUNTING



S - INTEGRATED BANDING PLATFORM



B - INTEGRATED BOOT ADAPTOR