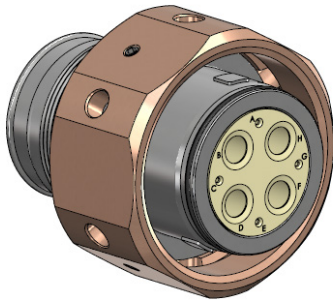




SeaKing™ Junior Dry-Mate Subsea Connectors



707-0498-1 Cable Connector Plug (CCP)



HOW TO ORDER	
Sample Part Number	707-0498 -1 -52 -36 B8 G -Z1 S N
Product Series	707-0498 = Cable Connector Plug
Connector Type	1 = CCP 5 = CCR 6 = FCR 7 = BCR
Shell Size	See Dimensions table
Insulator Size	See Dimensions table
Arrangement	
Grommet Designator	G = Grommet Seal Included Leave Blank for No Grommet Seal
Shell Material	Z1 = Stainless Steel, Passivated TA = Titanium with Anodic Coating See Component Materials table
Insert/Contact Designator	P = Pin Insulator with Pin Contacts Included S = Socket Insulator with Socket Contacts Included A = Pin Insulator Less Pin Contacts B = Socket Insulator Less Socket Contacts
Polarization	See Polarization table

NOTES

Electrical rating:

- Voltage: 600 vdc / 425 vac
- Current: see Current Rating table

Pressure rating

- Mated condition: 1,450 psi (1,000 meters depth)
- Open face: not rated

Contact installation: "crimp and poke" contacts are installed at the cable assembly level. Contacts are provided loose at this level.

Assembly is identified here with "06324 Glenair", part number and date code.

Packaging: product is fitted with dust caps and packaged with packing foam within a cardboard box.

MATERIAL COMPOSITION

Insulators: glass-reinforced P.E.E.K.

O-ring: nitrile.

Grommet seal: fluorosilicone.

See Component Materials table for remaining components.

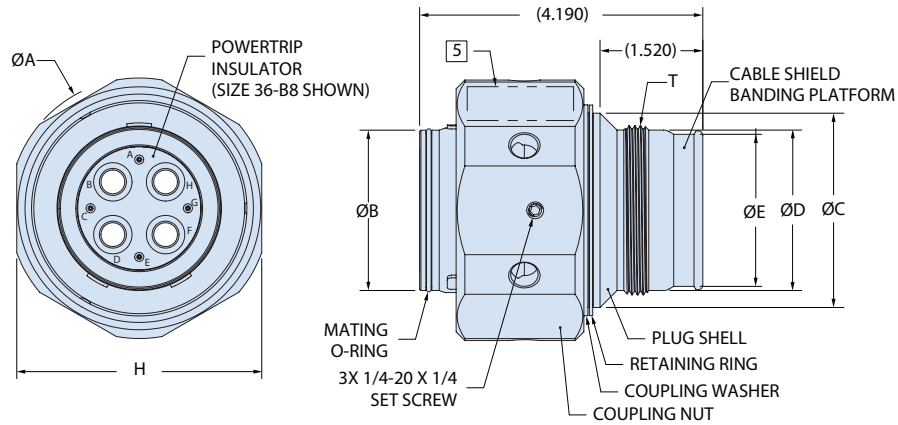
COMPONENT MATERIALS					
Shell Material Code	Plug Shell	Coupling Nut	Retaining Ring	Coupling Washer	Set Screws
Z1	Stainless Steel	Marine Bronze	Stainless Steel	Marine Bronze	Stainless Steel
TA	Titanium	Titanium	Titanium	Titanium	Titanium

INSERT ARRANGEMENTS														
Insert Arr.	Contact Size and Quantity						Insert Arr.	Contact Size and Quantity						
	#16	#12	#8	#4	#1/0	#2/0		#16	#12	#8	#4	#1/0	#2/0	
18-2			2				32-12	2		10				
18-4		2	2				32-2						2	
20-3			3				32-20	1	19					
20-4			4				32-3						3	
20-5		2	3				32-4				2	2		
20-7	4		3				32-5				5			
24-1					1		32-6		3			3		
24-2				2			32-7				7			
24-3				3			32-A22		22					
24-5			5				36-16	3		13				
24-6		4		2			36-2							2
24-A1						1	36-4						4	
24-A6		3		3			36-9	14	14	2	1			
28-12	6		6				36-A8				8			
28-15	15						36-B8	4				4		
28-4				4			40-10	16		9	4			
28-8		1	7				40-21			21				
28-9	5			4			40-5					5		

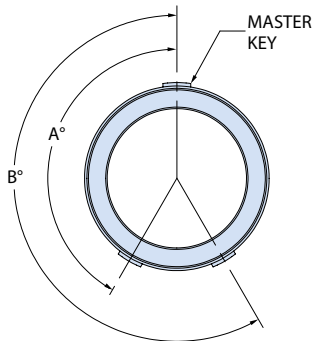


SeaKing™ Junior Dry-Mate Subsea Connectors

707-0498-1 Cable Connector Plug (CCP)



DIMENSIONS																
Shell Size	Insulation Size	ØA		ØB +.002 -.002		ØC		ØD +.002 -.002		ØE		H		T UN-2A Threads	Mating O-Ring Size	Retain. Ring Size
		inch	mm	inch	mm	inch	mm	inch	mm	inch	mm	inch	mm			
44	28	3.355	85.22	1.873	47.57	2.375	60.33	1.875	47.63	1.750	44.45	3.125	79.38	2.000-12	2-031	WS-237
48	32	3.605	91.57	2.123	53.92	2.625	66.68	2.125	53.97	2.000	50.80	3.375	85.73	2.250-12	2-033	WS-262
52	36	3.855	97.92	2.373	60.27	2.875	73.02	2.375	60.33	2.250	57.15	3.625	92.07	2.500-12	2-035	WS-287
56	40	4.105	104.27	2.623	66.62	3.125	79.38	2.625	66.68	2.500	63.50	3.875	98.43	2.750-12	2-037	WS-312



CURRENT RATINGS	
Contact Size	AMPS
16	13
12	23
8	60
4	100
1/0	175

ALTERNATE KEY POSITIONS		
Position	A°	B°
N	150°	210°
A	75°	210°
B	95°	230°
C	140°	275°