



HIGH VOLTAGE SUBSEA

# SeaKing™ Power connectors for underwater primary power junctions



Available configurations and applications

## CABLE CONNECTOR PLUG (CCP)



SeaKing™ Power  
API 16D and 17E-Compliant  
Cable Connector Plug (CCP)

- PBOF and overmold compatible cable connector plug
- Super duplex stainless steel or titanium construction with glass-reinforced thermoplastic insulator
- Accepts various backshell accessories
- Aggressive coupling nut knurling for easy field mating
- Inspection ports, spanner wrench holes, and coupling nut lock set screws ensure reliable foolproof performance
- Mates with SeaKing Power receptacle assemblies with similar contact arrangement
- Conductor sealing boots protect solder cup wire-to-contact terminations in the event of a flooded hose

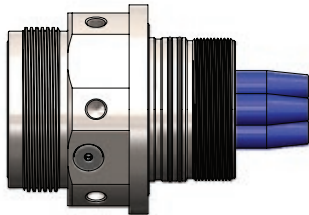
## FLANGE CONNECTOR RECEPTACLE (FCR)



SeaKing™ Power  
API 16D and 17E-Compliant  
Flange Connector Receptacle (FCR)

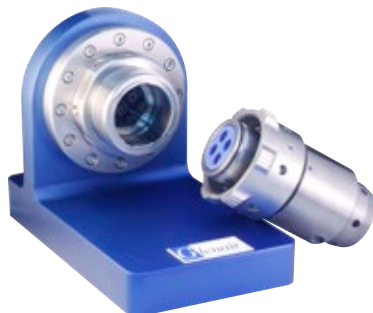
- FCR delivers 10K PSI sealing in both mated and open-face condition
- Indexable flange allows receptacle shell rotation for 360° routing flexibility of right-angle-mating cable plugs
- Available API O-ring pressure test ports ensure reliability prior to deployment to ocean floor
- Super duplex stainless steel or titanium shells for complete compatibility with mating CCP
- Wire sealing boots ensure reliable environmental protection of cable-to-connector interface

## BULKHEAD CONNECTOR RECEPTACLE (BCR)



SeaKing™ Power  
API 16D and 17E-Compliant  
Bulkhead Connector Receptacle (BCR)

- BCR is designed for direct threaded bulkhead mounting
- Supplied washer, mounting nut, and bulkhead-mate O-ring seals ensure secure sealing and grounding to equipment housing
- BCR shell equipped with both wrench flats and spanner wrench holes for convenient installation regardless of tool choice
- Available API O-ring pressure test ports ensure reliability prior to deployment
- Mates with SeaKing Power CCP with similar contact arrangement



SeaKing™ Power Performance Specifications		
Pressure Rating	Plug: 10,000 psi, mated condition Receptacles: 10,000 psi mated and open face	per ISO 13628-6
Electrical	1–3kV, 350 Amps max per contact	per MIL-STD-202, Method 301
Materials	Salt Spray (corrosion) Humidity (steady state) Thermal Cycle	MIL-STD-202, Method 101 MIL-STD-202, Method 103 ISO 13628-6
Power Ratings	3kV, 50 Amp / contact 1kV, 50 Amp / contact 1kV, 150 Amp / contact 1kV, 350 Amp / contact	P/N 700-101-48, 700-106-48 P/N 707-0065, 707-0066 P/N 707-0088, 707-0089 P/N 707-0142