

# "ZERO-CROSSTALK" M83513 Micro-D VersaLink™ Connectors



## GHS4-RPM, Pre-Wired Rear Panel Mount Connector

MICRO-D VERSALINK CONNECTORS

### MATERIALS AND FINISHES

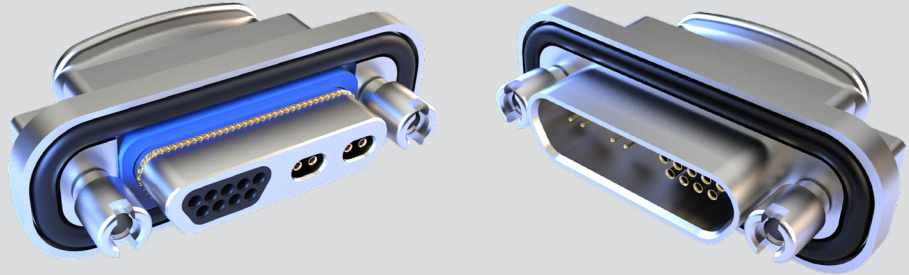
- Connector shell: aluminum alloy 6061
- Insulator (v): rigid dielectric
- Insulator (m): liquid crystal polymer (LCP) or polyphenylene sulfide (PPS)
- Flange seal: fluorosilicone rubber, blue
- Pin contact: copper alloy, gold over nickel plating
- Socket contact: copper alloy, gold over nickel plating
- Ground spring: stainless steel, gold plating
- Hardware: 300 series stainless steel, passivated
- Encapsulant: epoxy resin Hysol EE4215 and Duralco 120

### PERFORMANCE SPECIFICATIONS

- Current rating: 3 amp (Micro-D pins)
- DWV: 600 VAC sea level
- Insulation resistance: 5000 megohms min
- Operating temperature: -55°C to 150°C
- Mating force (contact m): (10 ounces) x (# of contacts)
- Mating force (contact v): (5 ounces) x (# of contacts)
- Electrical performance IAW Glenair specification GT-19-230
- Interface dimensions IAW MIL-DTL-83513

### NOTES

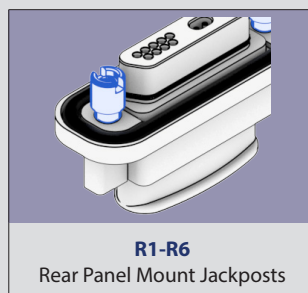
1. Refer to GHS4-M-1000 for insert arrangement details on page 90.
2. Refer to GHS4-M-1001 for wire layouts on page 92.
3. Plug connector uses pin Micro-D contacts and socket VersaLink contacts. Receptacle uses socket Micro-D contacts and pin VersaLink contacts.
4. Omit wire information when contact layout "M" = 0 (e.g. 1-0, 2-0, 4-0, 10-0).
5. Refer to 500-154 for protective cover on page 161.
6. Glenair VersaLink Micro-D pre-wired connectors are only available factory terminated.



### PART NUMBER DEVELOPMENT

Sample Part Number	GHS4-RPM	2	L-	2-9	P	C	6	J	1	-18	R3	N
<b>Series</b>	GHS4-RPM = Pre-Wired VersaLink Micro-D											
<b>Shell Finish</b>	2 = Nickel 5 = Gold											
<b>Insulator Material</b>	L = LCP or PPS											
<b>Contact Layout (V-M)<sup>1</sup></b>	1-0, 1-9, 2-0, 2-9, 2-15, 2-21, 3-9, 4-0, 4-15, 4-31, 8-9, 10-0											
<b>Connector Type<sup>4</sup></b>	P = Pin (Single End Plug) S = Socket (Single End Receptacle)											
<b>VersaLink Cable Type</b>	B = 963-068-26 C = 963-069-26											
<b>Discrete Wire Gage (AWG)<sup>5</sup></b>	4 = #24    6 = #26 8 = #28    0 = #30 (J Wire Type Only)											
<b>Discrete Wire Type<sup>5</sup></b>	K = M22759/11 600 VRMS Teflon (TFE) J = M22759/33 600 VRMS Modified Cross-Linked Tefzel (ETFE) E = NEMA HP3-EB 600 VRMS Type E M16878/4 (TFE)											
<b>Discrete Wire Color<sup>5</sup></b>	1 = White    5 = Color-coded Stripes Per MIL-STD-681 7 = Ten Color Repeating											
<b>Wire Length Inches</b>	18 = Wire Length in inches. "18" specifies 18 inches. 6 inch minimum											
<b>Rear Panel Mount Hardware<sup>2</sup></b>	R1 = .032 panel    R2 = .047 panel    R3 = .062 panel R4 = .093 panel    R5 = .125 panel    R6 = .080 panel (see mounting hardware table)											
<b>O-Ring</b>	C = Conductive    N = Non-conductive (Nitrile)    F = Fluorosilicone											

### MOUNTING HARDWARE



### INSERT ARRANGEMENTS

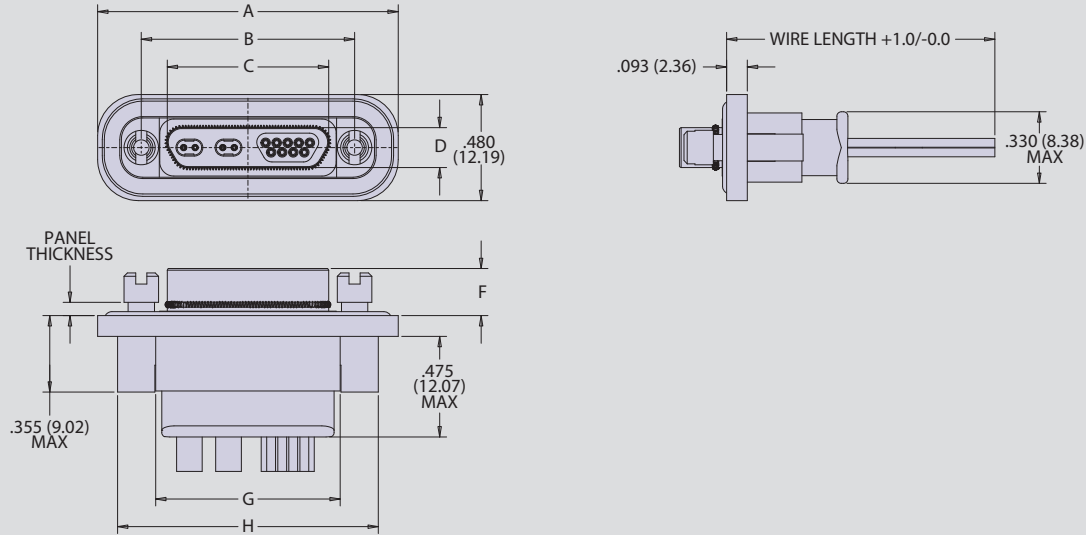
Insert	No. of Contacts		Insert	No. of Contacts	
	VersaLink (V)	TwistPin (M)		VersaLink (V)	TwistPin (M)
1-0	1	0	2-21	2	21
2-0	2	0	3-9	3	9
1-9	1	9	4-15	4	15
2-9	2	9	4-31	4	31
4-0	4	0	8-9	8	9
2-15	2	15	10-0	10	0

# "ZERO-CROSSTALK" M83513 Micro-D VersaLink™ Connectors



## GHS4-RPM, Pre-Wired Rear Panel Mount Connector

### GHS4-RPM PRE-WIRED REAR PANEL MOUNT CONNECTOR



#### CABLE ASSEMBLY DIMENSIONS

LAYOUT	A	B±.003	C MAX	D MAX	F±.003	G MAX	H MAX
1-ORP	0.960 (24.38)	0.565 (14.35)	0.333 (8.46)	0.184 (4.67)	0.213 (5.41)	0.445 (11.30)	0.790 (20.07)
1-ORS	0.960 (24.38)	0.565 (14.35)	0.400 (10.16)	0.250 (6.35)	0.225 (5.72)	0.445 (11.30)	0.790 (20.07)
2-ORP	1.110 (28.19)	0.715 (18.16)	0.483 (12.27)	0.184 (4.67)	0.213 (5.41)	0.595 (15.11)	0.940 (23.88)
2-ORS	1.110 (28.19)	0.715 (18.16)	0.551 (14.00)	0.250 (6.35)	0.225 (5.72)	0.595 (15.11)	0.940 (23.88)
1-9RP	1.260 (32.00)	0.865 (21.97)	0.633 (16.08)	0.184 (4.67)	0.213 (5.41)	0.745 (18.92)	1.090 (27.69)
1-9RS	1.260 (32.00)	0.865 (21.97)	0.701 (17.81)	0.250 (6.35)	0.225 (5.72)	0.745 (18.92)	1.090 (27.69)
2-9RP	1.360 (34.54)	0.965 (24.51)	0.733 (18.62)	0.184 (4.67)	0.213 (5.41)	0.845 (21.46)	1.190 (30.23)
2-9RS	1.360 (34.54)	0.965 (24.51)	0.801 (20.35)	0.250 (6.35)	0.225 (5.72)	0.845 (21.46)	1.190 (30.23)
4-ORP	1.360 (34.54)	0.965 (24.51)	0.733 (18.62)	0.184 (4.67)	0.213 (5.41)	0.845 (21.46)	1.190 (30.23)
4-ORS	1.360 (34.54)	0.965 (24.51)	0.801 (20.35)	0.250 (6.35)	0.225 (5.72)	0.845 (21.46)	1.190 (30.23)
2-15RP	1.510 (38.35)	1.115 (28.32)	0.833 (21.16)	0.184 (4.67)	0.213 (5.41)	0.995 (25.27)	1.340 (34.04)
2-15RS	1.510 (38.35)	1.115 (28.32)	0.951 (24.16)	0.250 (6.35)	0.225 (5.72)	0.995 (25.27)	1.340 (34.04)
3-9RP	1.660 (42.16)	1.265 (32.13)	1.033 (26.24)	0.184 (4.67)	0.213 (5.41)	1.145 (29.08)	1.490 (37.85)
3-9RS	1.660 (42.16)	1.265 (32.13)	1.101 (27.97)	0.250 (6.35)	0.225 (5.72)	1.145 (29.08)	1.490 (37.85)
4-15RP	2.010 (51.05)	1.615 (41.02)	1.384 (35.15)	0.184 (4.67)	0.213 (5.41)	1.495 (37.97)	1.840 (46.74)
4-15RS	2.010 (51.05)	1.615 (41.02)	1.450 (36.83)	0.250 (6.35)	0.225 (5.72)	1.495 (37.97)	1.840 (46.74)
4-31RP	2.410 (61.21)	2.015 (51.18)	1.784 (45.31)	0.184 (4.67)	0.213 (5.41)	1.895 (48.13)	2.240 (56.90)
4-31RS	2.410 (61.21)	2.015 (51.18)	1.850 (46.99)	0.250 (6.35)	0.225 (5.72)	1.895 (48.13)	2.240 (56.90)
8-9RP	2.410 (61.21)	2.015 (51.18)	1.784 (45.31)	0.184 (4.67)	0.213 (5.41)	1.895 (48.13)	2.240 (56.90)
8-9RS	2.410 (61.21)	2.015 (51.18)	1.850 (46.99)	0.250 (6.35)	0.225 (5.72)	1.895 (48.13)	2.240 (56.90)
10-ORP	2.410 (61.21)	2.015 (51.18)	1.784 (45.31)	0.184 (4.67)	0.213 (5.41)	1.895 (48.13)	2.240 (56.90)
10-ORS	2.410 (61.21)	2.015 (51.18)	1.850 (46.99)	0.250 (6.35)	0.225 (5.72)	1.895 (48.13)	2.240 (56.90)

#### INSERT ARRANGEMENTS

Insert	No. of Contacts	
	VersaLink (V)	TwistPin (M)
1-0	1	0
2-0	2	0
1-9	1	9
2-9	2	9
4-0	4	0
2-15	2	15
2-21	2	21
3-9	3	9
4-15	4	15
4-31	4	31
8-9	8	9
10-0	10	0

MICRO-D VERSALINK CONNECTORS