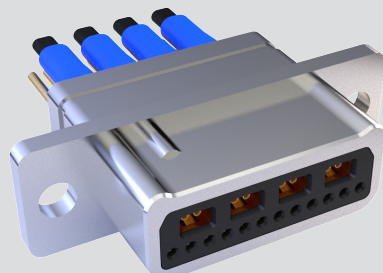


"ZERO-CROSSTALK" Series 794 VersaLink™ Connectors



Modification Code 1279 for Optional Polarization Keys

MODIFICATION CODE 1279 POLARIZING KEYS



Plug connector with key at position L

Series 794 connectors are available with an optional polarizing key. Keyed plug connectors have a raised boss on the shell as shown in the photograph at left. Receptacles have corresponding keyway. Ordering is simple—just add the keying position letter designator to the end of the part number.

Note: keyed receptacles will mate with unkeyed plugs.

MOD CODE -1279 KEYING OPTION ORDERING EXAMPLE

Step 1	Create a Series 794 Part Number	794-001SG-4V12MN
Step 2	Add dash and key position letter designator	794-001SG-4V12MN-A

POLARIZATION KEY POSITIONS

SHELL SIZE A:

KEYS B, D, E, F

SHELL SIZES B, C,

D, E, F, G, J, K, P, Q, R:
KEYS A THRU F

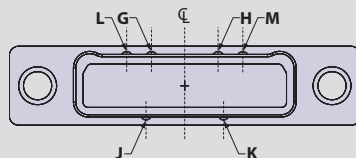
SHELL SIZES H, L,:

ALL KEYS (A THRU M)

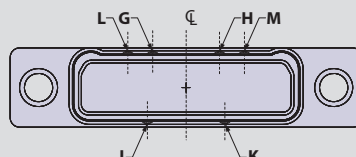
SHELL SIZES S, T, U:

KEYS A THRU K

PLUG

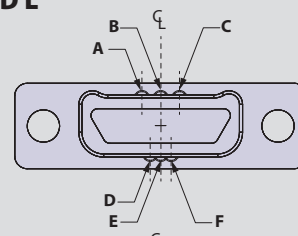


RECEPTACLE

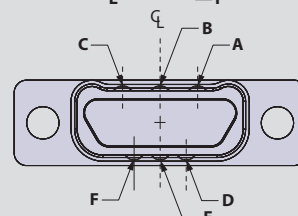


POLARIZATION KEY POSITIONS A, B, C, D, E, F FOR SHELL SIZE A, B, C, D, E, F, G, J, K, H AND L

PLUG



RECEPTACLE



KEY LOCATIONS

Key Position Offset From Vertical Centerline; Plug and Receptacle

Shell Size	Position A	Position B	Position C	Position D	Position E	Position F	Position G	Position H	Position J	Position K	Position L	Position M
A	--	.00 (.00)	--	.025 (0.64)	.00 (.00)	.025 (0.64)						
B	.090 (2.29)	.00 (.00)	.090 (2.29)	.050 (1.27)	.00 (.00)	.050 (1.27)						
C	.130 (3.30)	.00 (.00)	.130 (3.30)	.100 (2.54)	.00 (.00)	.100 (2.54)						
D	.180 (4.57)	.00 (.00)	.180 (4.57)	.125 (3.18)	.00 (.00)	.125 (3.18)						
E	.200 (5.08)	.00 (.00)	.200 (5.08)	.150 (3.81)	.00 (.00)	.150 (3.81)						
F	.300 (7.62)	.00 (.00)	.300 (7.62)	.250 (6.35)	.00 (.00)	.250 (6.35)						
G	.300 (7.62)	.00 (.00)	.300 (7.62)	.200 (5.08)	.00 (.00)	.200 (5.08)						
J	.450 (11.43)	.00 (.00)	.450 (11.43)	.400 (10.16)	.00 (.00)	.400 (10.16)						
K	.650 (16.51)	.00 (.00)	.650 (16.51)	.550 (13.97)	.00 (.00)	.550 (13.97)						
H	.450 (11.43)	.00 (.00)	.450 (11.43)	.500 (12.70)	.00 (.00)	.500 (12.70)	.215 (5.46)	.215 (5.46)	.250 (6.35)	.250 (6.35)	.375 (9.53)	.375 (9.53)
L	.550 (13.97)	.00 (.00)	.550 (13.97)	.600 (15.24)	.00 (.00)	.600 (15.24)	.315 (8.00)	.315 (8.00)	.350 (8.89)	.350 (8.89)	.475 (12.07)	.475 (12.07)
P	.025 (0.64)	.00 (.00)	.025 (0.64)	.100 (2.54)	.00 (.00)	.100 (2.54)						
Q	.200 (5.08)	.00 (.00)	.200 (5.08)	.325 (8.26)	.00 (.00)	.325 (8.26)						
R	.375 (9.53)	.00 (.00)	.375 (9.53)	.500 (12.70)	.00 (.00)	.500 (12.70)						
S	.550 (13.97)	.00 (.00)	.550 (13.97)	.600 (15.24)	.00 (.00)	.600 (15.24)	.315 (8.00)	.315 (8.00)	.350 (8.89)	.350 (8.89)		
T	.700 (17.78)	.00 (.00)	.700 (17.78)	.750 (19.05)	.00 (.00)	.750 (19.05)	.315 (8.00)	.315 (8.00)	.350 (8.89)	.350 (8.89)		
U	.700 (17.78)	.00 (.00)	.700 (17.78)	.750 (19.05)	.00 (.00)	.750 (19.05)	.315 (8.00)	.315 (8.00)	.350 (8.89)	.350 (8.89)		

POSITIONS G, H, J, K, L, AND M ARE NOT AVAILABLE FOR SHELL SIZE A, B, C, D, E, F, G, J, K

POSITIONS G, H, J, K, L, M ARE NOT AVAILABLE FOR SHELL SIZE P, Q, R

POSITIONS L, M ARE NOT AVAILABLE FOR SHELL SIZE S, T, U