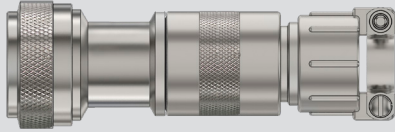


"ZERO-CROSSTALK" Series 806 Mil-Aero VersaLink™ Connectors



443V*042 Banding Backshell, Shrouded, Expanded Clearance

SERIES 806 VERSALINK CONNECTORS



Prevents splaying of VersaLink contacts. Environmental. "Band-in-a-Can" shield termination. Saddle clamp. 443V*042 banding backshell fits Glenair Series 806 Mil-Aero VersaLink connectors. Backshell has increased clearance for sealing boots used with VersaLink contacts. Anti-decoupling mechanism provides audible detented coupling and prevents backoff under high vibration. Terminate cable braid shield with band strap (optional). Environmentally sealed with O-rings. Aluminum or stainless steel. Saddle clamp hardware is passivated SST. Silicone O-rings and grommet. Aluminum version has thermoplastic detent spring, stainless steel version has stainless steel detent spring.

ADAPTER CODE V

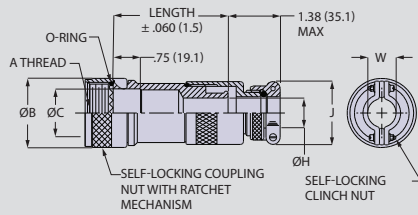
- This accessory fits Glenair Series 806 Mil-Aero VersaLink connectors

		HOW TO ORDER						
Sample Part Number		443VS042	ME	12	04	-8	K	P
Basic Part November	443VS042	S	Straight					
	443VM042	M	45°					
	443VN042	N	90°					
Material / Finish	ME = Aluminum / Electroless Nickel MT = Aluminum / Nickel-PTFE NF = Aluminum / Olive Drab Cadmium ZR = Aluminum / Black Zinc-Nickel TZ = Aluminum / Tin-Zinc Z1 = Stainless Steel / Passivated							
Shell Size	08 09 10 11 12 14 16 18 20 22 24							
Entry Size	Size	Cable Range		Shell Sizes				
		Min	Max					
	01 =	.125 (3.2)	.250 (6.4)	8-24				
	02 =	.188 (4.8)	.375 (9.5)	10-24				
	03 =	.312 (7.9)	.438 (11.1)	11-24				
	04 =	.343 (8.7)	.500 (12.7)	12-24				
	05 =	.438 (11.1)	.625 (15.9)	16-24				
	06 =	.562 (14.3)	.750 (19.1)	18-24				
	07 =	.688 (17.5)	.875 (22.2)	20-24				
	08 =	.812 (20.6)	1.000 (25.4)	22-24				
09 =	.938 (23.8)	1.125 (28.6)	24					
Length	-8 = 2.0 in. -10 = 2.5 in. -12 = 3.0 in. -14 = 3.5 in.							
Band	Omit if not required K Pre-Coiled Band Included							
Polysulfide	Omit if not required. Applies to Plating Codes NF, ZR, TZ only. P = Nickel Plated Shield Termination Area with Polysulfide Barrier							

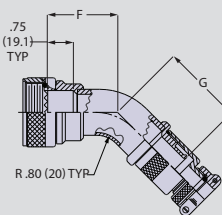
"ZERO-CROSSTALK" Series 806 Mil-Aero VersaLink™ Connectors



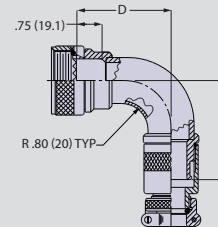
443V*042 Banding Backshell, Shrouded, Expanded Clearance



Profile S Straight



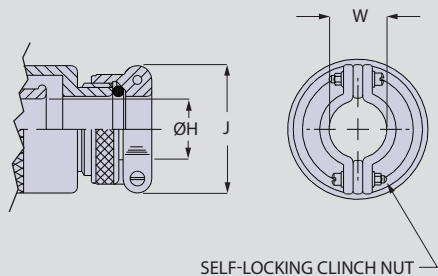
Profile M 45°



Profile N 90

DIMENSIONS

Shell Size	A Thread ISO Metric	øB Max.	øC ± .005 (0.1)	D Max.	E Max.	F Max.	G Max.	Max. Entry Size
08	M10 x 1.0-6H	.710 (18.03)	.269 (6.83)	1.893 (48.08)	1.903 (48.34)	1.433 (36.40)	1.443 (36.65)	01
09	M12 x 1.0-6H	.780 (19.81)	.346 (8.79)	1.893 (48.08)	1.903 (48.34)	1.433 (36.40)	1.443 (36.65)	01
10	M14 x 1.0-6H	.880 (22.35)	.410 (10.41)	1.955 (49.66)	1.965 (49.91)	1.460 (37.08)	1.470 (37.34)	02
11	M15 x 1.0-6H	.920 (23.37)	.471 (11.96)	1.955 (49.66)	1.965 (49.91)	1.460 (37.08)	1.470 (37.34)	02
12	M17 x 1.0-6H	1.000 (25.40)	.539 (13.69)	2.107 (53.52)	2.117 (53.77)	1.485 (37.72)	1.495 (37.97)	04
14	M19 x 1.0-6H	1.090 (27.69)	.592 (15.04)	2.107 (53.52)	2.117 (53.77)	1.485 (37.72)	1.495 (37.97)	04
16	M22 x 1.0-6H	1.210 (30.73)	.740 (18.80)	2.170 (55.12)	2.180 (55.37)	1.541 (39.14)	1.551 (39.40)	05
18	M25 x 1.0-6H	1.330 (33.78)	.856 (21.74)	2.275 (57.79)	2.285 (58.04)	1.580 (40.13)	1.590 (40.39)	06
20	M28 x 1.0-6H	1.450 (36.83)	.980 (24.89)	2.338 (59.39)	2.348 (59.64)	1.606 (40.79)	1.616 (41.05)	07
22	M31 x 1.0-6H	1.570 (39.88)	1.070 (27.18)	2.399 (60.93)	2.409 (61.19)	1.588 (40.34)	1.598 (40.59)	08
24	M34 x 1.0-6H	1.700 (43.18)	1.214 (30.84)	2.420 (61.47)	2.430 (61.72)	1.610 (40.89)	1.620 (41.15)	09



SELF-LOCKING CLINCH NUT

ENTRY SIZE DIMENSIONS

Entry Size	Cable Range		J Max.	W Closed	ø H	Shell Sizes
	Min.	Max.				
01	.125 (3.18)	.250 (6.35)	1.05 (26.67)	.264 (6.71)	.25 (6.35)	8-24
02	.188 (4.78)	.375 (9.53)	1.20 (30.48)	.344 (8.74)	.37 (9.40)	10-24
03	.312 (7.92)	.438 (11.13)	1.30 (33.02)	.460 (11.68)	.43 (10.92)	11-24
04	.343 (8.71)	.500 (12.70)	1.44 (36.58)	.545 (13.84)	.50 (12.70)	12-24
05	.438 (11.13)	.625 (15.88)	1.69 (42.93)	.698 (17.73)	.62 (15.75)	16-24
06	.562 (14.27)	.750 (19.05)	1.77 (44.96)	.780 (19.81)	.75 (19.05)	18-24
07	.688 (17.48)	.875 (22.23)	2.12 (53.85)	.950 (24.13)	.87 (22.10)	20-24
08	.812 (20.62)	1.000 (25.40)	2.50 (63.50)	1.015 (25.78)	1.00 (25.40)	22-24
09	.938 (23.83)	1.125 (28.58)	2.62 (66.55)	1.187 (30.15)	1.12 (28.45)	24

BAND

- Optional SST band strap provides fast, cost-effective and highly reliable termination of braided metallic shielding.
- The Band-Master ATS® Advanced Cable Shield Termination System provides excellent static loading and corrosion resistance in electrical wire interconnect systems.



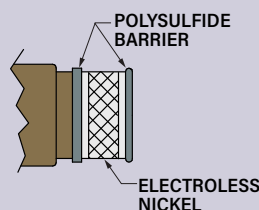
Band
601-041



Banding Tool
601-100

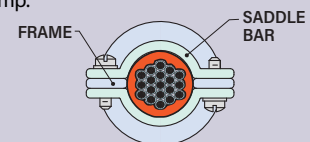
POLYSULFIDE

- Optional selective electroless nickel plating on shield termination area and polysulfide dielectric barrier prevents galvanic mismatch between nickel-coated braid shield and backshell.
- ⚠️ *Plating codes NF, ZR and TZ only*



APPLICATION NOTE

- This backshell has a full radius saddle clamp. This type of strain relief is designed to be fully closed. Saddle bars should be bottomed onto frame. Build up cable diameter with tape or sleeve to meet the diameter of the fully closed clamp.



FULL RADIUS SADDLE CLAMP
SADDLE BARS SHOULD BE FULLY BOTTOMED ONTO FRAME.