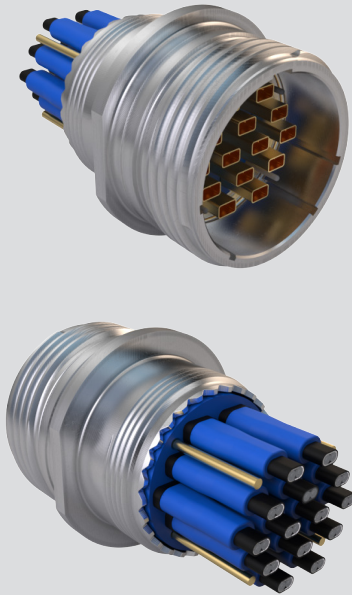


# "ZERO-CROSSTALK" Series 806 Mil-Aero VersaLink™ Connectors



## 806-047 VersaLink In-Line Receptacle

SERIES 806 VERSALINK CONNECTORS



PART NUMBER DEVELOPMENT						
Sample Part Number	806-047	-ME	18-14V4	A	M	A
Series / Basic No.	806-047 = In-line receptacle					
Material / Finish	<b>ME</b> = Aluminum alloy, electroless nickel (96 hour salt spray) <b>MT</b> = Aluminum alloy, nickel-PTFE <b>NF</b> = Aluminum alloy, cad./O.D. Over electroless nickel <b>ZR</b> = Aluminum alloy, zinc nickel, black (tri-valent cr) <b>Z1</b> = Aluminum alloy, stainless steel passivated <b>ZL</b> = Aluminum alloy, electro-deposited nickel					
Insert Layout	See Insert Arrangement Table (See page 13–14 for layouts)					
Contact Gender	<b>A</b> = Pin, less contact <b>B</b> = Socket, less contact					
Shell Style	<b>M</b> = Metricthread <b>B</b> = Banding platform					
Polarization	<b>A, B, C, D, E, F</b> ; see Polarization Table					

### MATERIAL AND FINISH

- Shell, spanner nut: see part number development
- Insulators: rigid dielectric/N.A.
- Seals/grommets, O-rings: fluorosilicone blend/N.A.
- Contacts: copper alloy/gold

### PERFORMANCE SPECIFICATIONS

- Current rating for 20HD and 22HD  
20 AWG: 7.5 amps  
22 AWG: 5 amps
- DWV  
20HD: 1800 VAC at sea level  
22HD: 1300 VAC at sea level
- Insulation resistance:  
5000 MΩ min. at ambient temperature  
1000 MΩ min. at elevated temperature
- Operating temperature: -65° to +200° C

### NOTES

1. Glenair strongly recommends the use of strain relief 620VS090 or equivalent when using a metric accessory thread shell. Glenair strongly recommends overmolding when using a banding porch shell.
2. Consult factory for use with other cables.
3. Groove for use with overmold strain relief or 809-060 heat shrink boots.
4. Terminate shield with Glenair bandmaster at tool 601-108 & Glenair Nanoband.
5. VersaLink contacts are purchased separately. See following drawings for more information:  
VersaLink: 853-045 & 853-046  
22HD: 850-094 & 850-095  
20HD: 809-204 & 809-205  
See 8574-0001 for pre-terminated VersaLink contacts. Contact factory for complete cable assemblies.
6. Receptacle mates with 806-044 of the same arrangement, polarization, and opposite gender. See catalog for contact tools.
7. Blue color band indicates rear release retention.
8. Red color band indicates full mate.

### INSERT ARRANGEMENT

SHELL SIZE-LAYOUT	NUMBER OF CONTACTS		
	VersaLink	22HD	20HD
8-1V	1		
9-2V	2		
10-2V2	2		2
11-4V <sup>1</sup>	4		
11-2V9 <sup>2</sup>	2	9	
12-4V4	4	4	
14-6V7	6	7	
14-4V15 <sup>3</sup>	4	15	
16-10V4	10	4	
16-8V10	8	10	
18-14V4	14	4	
18-8V31	8	31	
20-18V8	18	8	
22-25V4	25	4	
22-16V19	16	19	
24-32V	32		
24-16V66	16	66	

Support for:

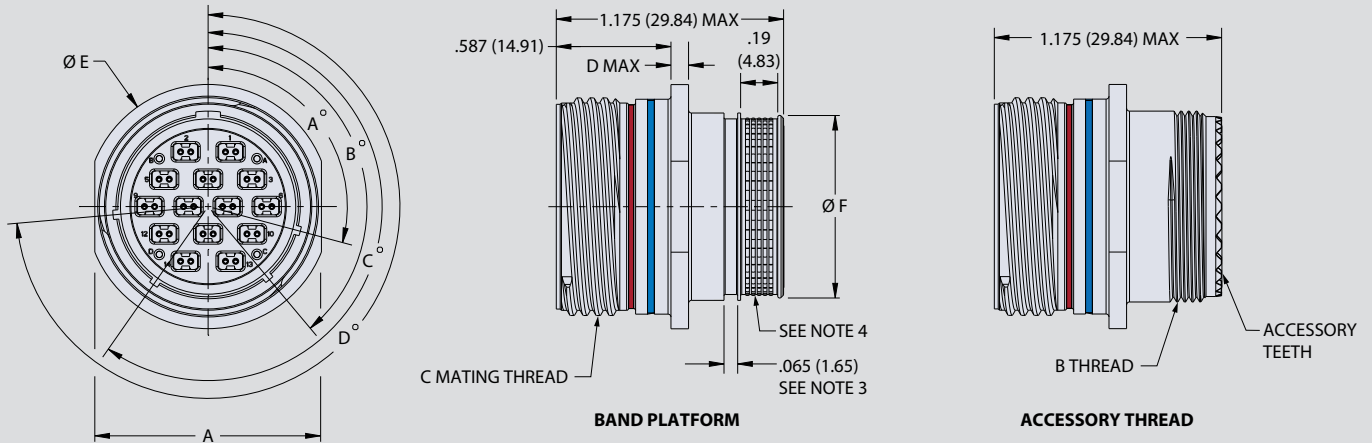
1. 40G Ethernet
2. USB 3.1 Gen 2
3. USB 3.2, USB 4, HDMI, DP, DVI Single Link

# "ZERO-CROSSTALK" Series 806 Mil-Aero VersaLink™ Connectors



## 806-047 VersaLink In-Line Receptacle

SERIES 806 VERSALINK CONNECTORS



### CONNECTOR DIMENSIONS

SHELL SIZE	A ±0.010	B THREAD	C MATING THREAD	D MAX	E	F
8	0.545 (13.84)	M10 X 1-6g.100R	.5000-.067P-.2L-TS-2B	0.100 (2.54)	0.635 (16.13)	0.327 (8.31)
9	0.612 (15.54)	M12 X 1-6g.100R	.5625-.067P-.2L-TS-2B	0.100 (2.54)	0.702 (17.83)	0.406 (10.31)
10	0.680 (17.27)	M14 X 1-6g.100R	.6250-.067P-.2L-TS-2B	0.100 (2.54)	0.770 (19.56)	0.484 (12.29)
11	0.747 (18.97)	M15 X 1-6g.100R	.6875-.067P-.2L-TS-2B	0.100 (2.54)	0.837 (21.26)	0.524 (13.31)
12	0.803 (20.40)	M17 X 1-6g.100R	.7500-.067P-.2L-TS-2B	0.100 (2.54)	0.893 (22.68)	0.603 (15.32)
14	0.925 (23.50)	M19 X 1-6g.100R	.8750-.067P-.2L-TS-2B	0.100 (2.54)	1.015 (25.78)	0.681 (17.30)
16	1.050 (26.67)	M22 X 1-6g.100R	1.0000-.067P-.2L-TS-2B	0.100 (2.54)	1.140 (28.96)	0.782 (19.86)
18	1.160 (29.46)	M25 X 1-6g.100R	1.1250-.067P-.2L-TS-2B	0.100 (2.54)	1.250 (31.75)	0.899 (22.83)
20	1.310 (33.27)	M28 X 1-6g.100R	1.2500-.067P-.2L-TS-2B	0.125 (3.18)	1.400 (35.56)	1.043 (26.49)
22	1.435 (36.45)	M31 X 1-6g.100R	1.3750-.067P-.2L-TS-2B	0.125 (3.18)	1.525 (38.74)	1.155 (29.34)
24	1.560 (39.62)	M34 X 1-6g.100R	1.5000-.067P-.2L-TS-2B	0.125 (3.18)	1.650 (41.91)	1.273 (32.33)

### POLARIZATION

POS	A	B	C	D
A	105	140	215	265
B	102	170	248	305
C	80	150	230	295
D	68	140	205	275
E	64	155	234	304
F	72	120	200	298

### VERSALINK CONTACTS SOLD SEPARATELY

Pin	<b>853-045</b>
Socket	<b>853-046</b>
Pin Pigtail	<b>8574-0001-AN</b>
Socket Pigtail	<b>8574-0001-BN</b>
Pin-Pin Cable	<b>8574-0001-AA</b>
Pin-Socket Cable	<b>8574-0001-AB</b>
Socket-Socket Cable	<b>8574-0001-BB</b>

### SIGNAL AND POWER CONTACTS SOLD SEPARATELY

#22HD Pin	Wire size #22-#28	<b>850-094-1</b>
#22HD Pin	Wire size #26-#30	<b>850-094-2</b>
#22HD Socket	Wire size #22-#28	<b>850-095-1</b>
#22HD Socket	Wire size #26-#30	<b>850-095-2</b>
#20HD Pin	Wire size #20-#24	<b>809-204</b>
#20HD Socket	Wire size #20-#24	<b>809-205</b>

### COMPATIBLE SPEEDLINE CABLE

Twisted Pair	<b>963-068-26</b>
Flat Pair	<b>963-069-26</b>