

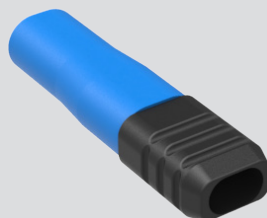
"ZERO-CROSSTALK"

VersaLink™ Differential Twinax Contacts / Cables



VersaLink Contact Grommet Follower, Dummy Contacts, Crimp Tools and Removal Tool

859-207 VERSALINK GROMMET FOLLOWER



Optional grommet follower is recommended. Slide boot onto wire before terminating contact. After contact is installed in connector, slide boot forward into connector grommet to seal the contact cavity

PART NUMBER DEVELOPMENT		
SAMPLE PART NUMBER	859-207	-2
Basic No	859-207 = VersaLink, Grommet Follower	
Cable	See Table I	

MATERIAL AND FINISH

- Grommet: fluorosilicone blend
- Follower: rigid dielectric

TABLE I		
Dash No	Cable P/N	Envelope Dimensions
-2	963-069-26	.133 x .083

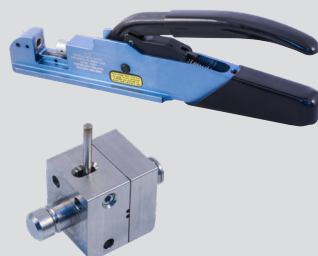
859-224 VERSALINK PIN OR SOCKET DUMMY CONTACT SEALING PLUG



Conventional sealing plugs, combined with the connector grommet seal, provide reliable dust and moisture ingress protection. But common contact sealing plugs still require that a properly-sized electrical contact be first inserted into the cavity, followed by the plastic plug. Glenair innovative Dummy Contact Sealing Plugs (DCSP) eliminate the need to use expensive electrical contacts as part of the sealing regimen. Fast and easy-to-install, these longer form-factor Dummy Contact Sealing Plugs (DCSP) are a one-piece solution to contact cavity sealing that results in significant weight reduction, material cost reduction, and assembly labor. **Grommet follower 859-207-2 required to seal rear of cavity.**

PART NUMBER DEVELOPMENT		
SAMPLE PART NUMBER	859-224	-P
Basic No	859-224 = VersaLink, Dummy Contact	
Gender	P = Pin S = Socket	

VERSALINK INNER CONTACT CRIMP TOOL



Contact Crimp Tool	
853-045 Pin	809-464
853-046 Skt	
Contact Crimp Die	
853-045 Pin	859-205
853-046 Skt	

VERSALINK SHIELD CRIMP TOOL



Shield Crimp Tool	
853-045 Pin	809-465
853-046 Skt	
Shield Crimp Die	
853-045 Pin	859-206
853-046 Skt	

VERSALINK CONTACT ASSEMBLY TOOL



Socket Assembly Tool
600-277

VERSALINK CONTACT REMOVAL TOOL



Removal Tool
859-158

VERSALINK CONTACTS AND CABLES